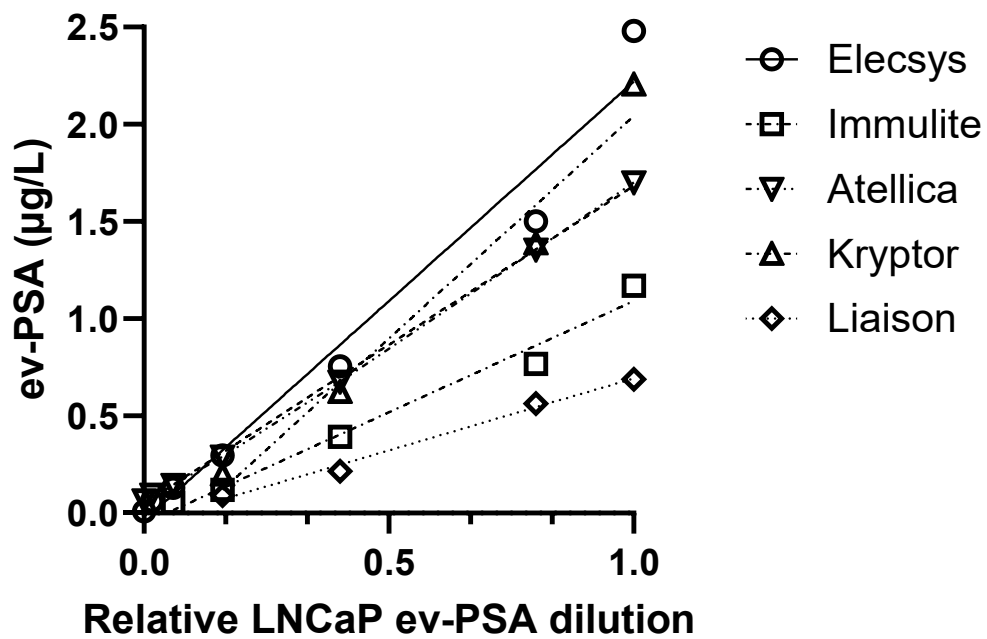


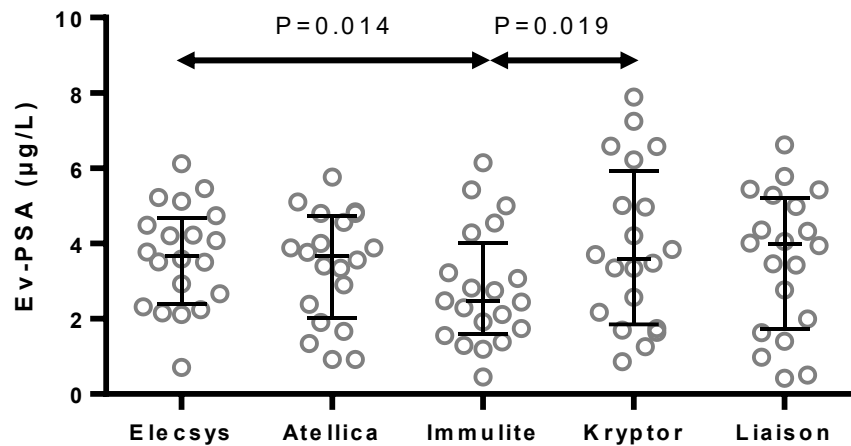
Supplemental Table 1. Prostate specific antigen concentrations in serum, EVs and supernatant from 42 patients quantified by Elecsys and Immulite immunoassays

	Elecsys	Immulite	P
s-PSA (µg/L)	22.03 (5.39-51.86)	21.78 (5.65-48.60)	0.988
ev-PSA (µg/L)	0.22 (0.06-0.47)	0.17 (0.04-0.34)	0.966
sn-PSA (µg/L)	20.31(5.12-52.98)	20.50 (4.78-47.38)	0.991

Concentrations are indicated as median (Interquartile range). s-PSA – prostate specific antigen quantified in serum. ev-PSA - prostate specific antigen quantified in extracellular vesicles. sn-PSA - prostate specific antigen quantified in supernatant.



Supplemental Figure 1. Linearity analysis of ev-PSA in LNCaP exosomes measured with Elecsys, Atellica, Immulite, Kryptor and Liaison immunoassays.



Supplemental Figure 2. Comparison of the concentration of ev-PSA measured with Elecsys, Atellica, Immulinite, Kryptor and Liaison immunoassays. Horizontal lines represent median and interquartile range. Only comparisons with $P < 0.05$, which were considered statistically significant, were indicated by the corresponding arrows heads.